

# Luton LINK

## Local Involvement Network

### An Overview

**Nisar Mohammed**  
**Community Development Officer**

*Stronger Voice, Better Care*

Luton LINK

# Aim

**To provide an overview of the function of Luton LINK and its role in representing the users of both health and social care services within Luton**

# What is Luton LINK?

- **Voluntary Organisation with Statutory Powers**
- Introduced under the Local Government and Public Involvement in Health Act 2007
- Luton LINK is made up of individuals/groups who have the opportunity to influence local health and adult social care services
- Each LINK is funded by it's Local Authority
- Supported by a 'Host' organisation (Shaw Trust)

# What is the role of Luton LINK?

- Provide evidence of what people like and dislike about services directly to the providers
- Make recommendations to people responsible for commissioning, providing, managing and scrutinising local health and social care services
- Use its Specific powers to monitor, influence and improve statutory services provided by local authorities and health care providers

# What does Luton LINK do?

- **Look into specific issues of concern to the community**
- **Carry out evidence based visits (Enter & View), to see if services are meeting the standards required (carried out under safeguards)**
- **Provide commentary into Care Quality Commissioning annual reports on local health and social care providers**
- **Provide commentary into Quality Accounts**
- **Refer matters of concern to the local Overview and Scrutiny Committee**

# Luton LINK Membership

- **Over 150 registered members**
- **Including over 75 local voluntary organisations & charities**
- **All registered members reflect the cultural diversity of Luton**

Alan Fletcher  
Acute FG Chair



# Luton LINK Chairs

Ann Brown  
Commissioning  
FG Chair



Neville White MBE  
Core Group Chair



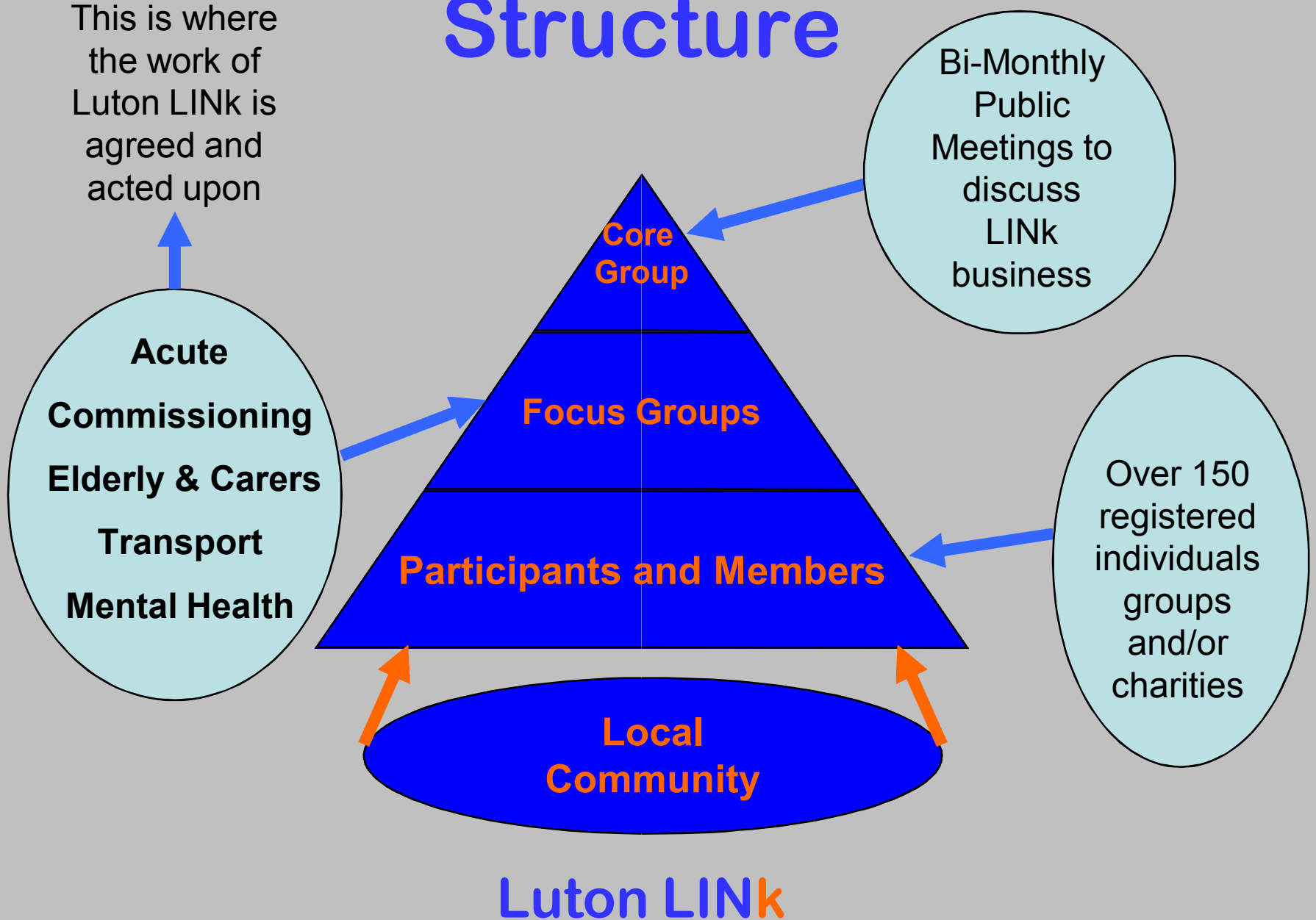
Philip Jerred  
Transport  
FG Chair



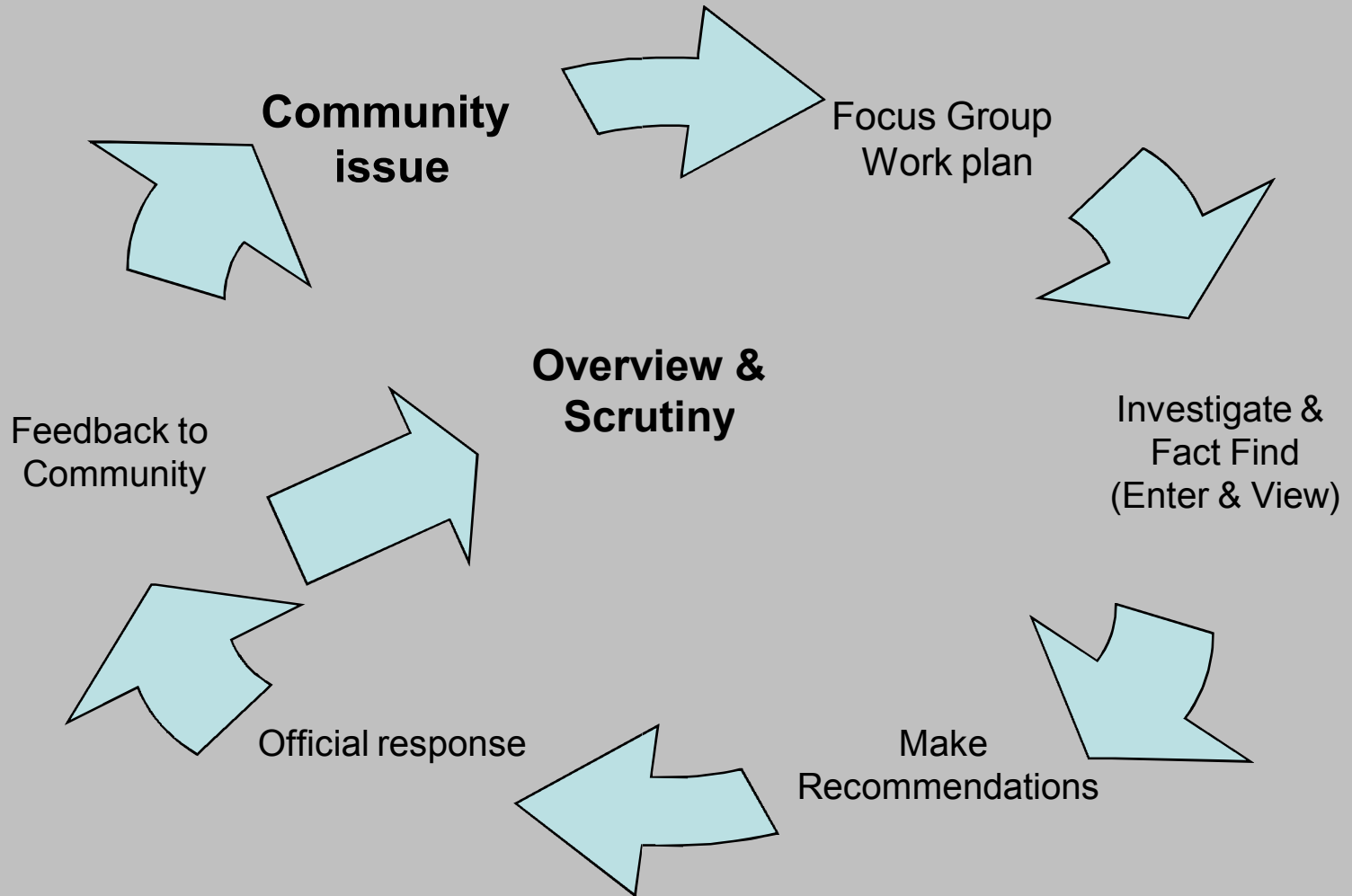
Angela Andrews  
Elderly & Carers  
FG Chair



# Structure



# An Example of the Work Cycle



# Luton LINk Priorities

- GOVERNANCE

- Have a clear governance structure where all members views count

- PRIORITIES

- Develop constructive dialogue with all responsible for commissioning and delivering statutory health and social care services

- PUBLIC ENGAGEMENT

- Represent ALL sections of the Community

- ACCOUNTABILITY

- Monitor the design and provision of both Health & Social Care Services

# Examples of Luton LINK Achievements

- National Study Day on World Class Commissioning
- Luton LINK Information Day
- Regular formal communication with Commissioners, Providers and Local Authority (including OSC)
- Board Membership on NHS East of England Strategic Health Authority
- Recruitment of a Youth LINK

# Planned Activities

- Joint Mental Health Personalisation event
- Mental Health Users & Carers Information Day
- Enter & View Visits
- Quality Accounts
- Annual General Meeting
- 2009/10 Annual Report

**YOUR Local  
YOUR Involvement  
YOUR Network**

**Any Questions?**

**Luton LINK, AW House, Luton  
01582 727001 [www.lutonlink.org.uk](http://www.lutonlink.org.uk)  
Luton.Link@shaw-trust.org.uk**

**Luton LINK**