



Cliff Andrews

Green Infrastructure Team Leader

cliffa@bedsrcc.org.uk

01767 626456

BRCC's priorities...to help create
**Stronger, Greener,
Thriving, Aspiring
& Inclusive**
communities

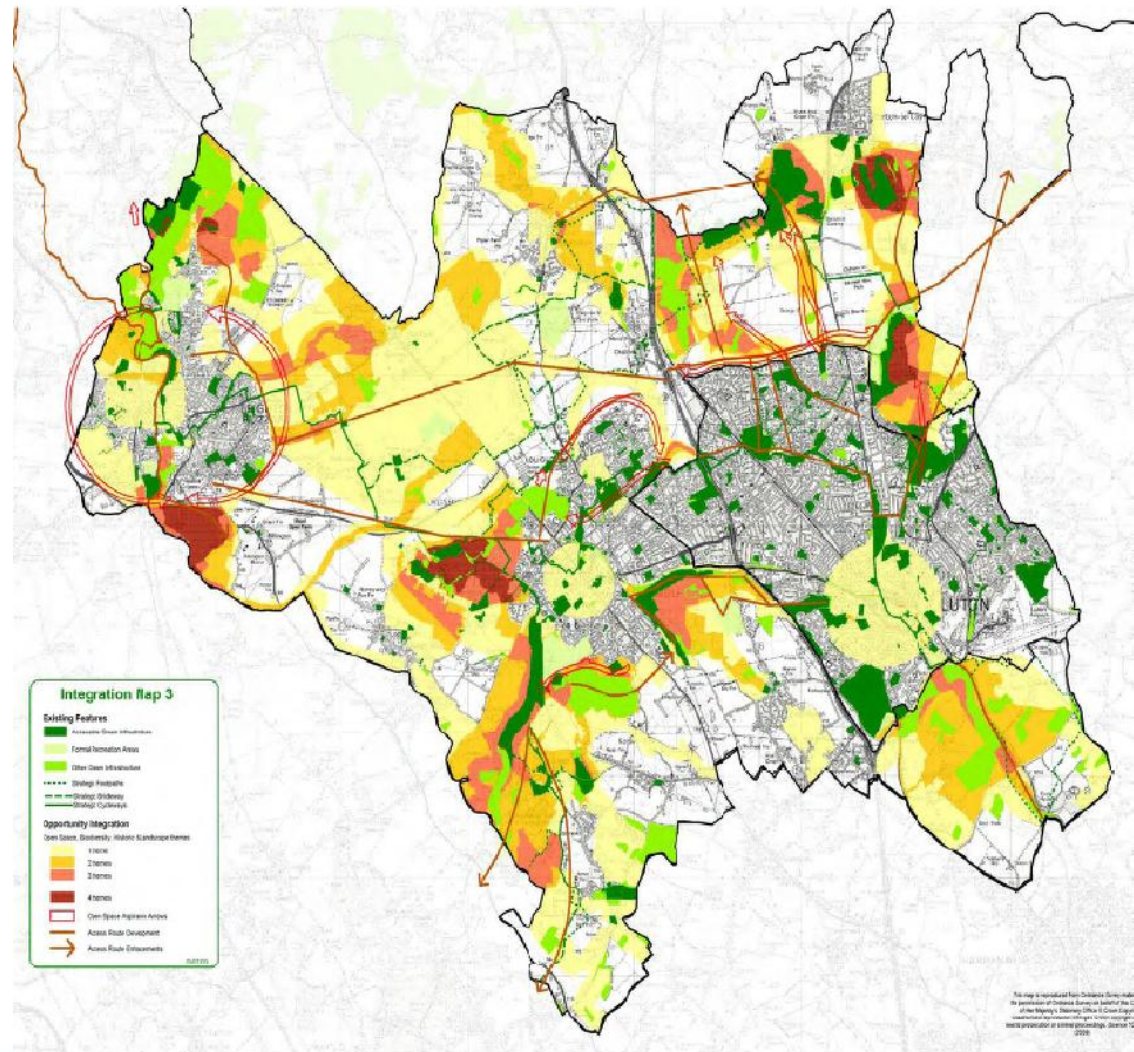
GI - What is it?

Green Infrastructure (GI) is a very wide-ranging subject, but in essence it can be defined as:

The planning, delivery and management of environmental assets, including public access, green spaces, biodiversity, landscape and heritage features; which together create a healthy, functioning environment.

GI Plans

- Beds & Luton Strategic GI Plan (2007)
- Luton & S Beds GI Plan (2009)
- Various Parish GI Plans (2007-)



GI Planning

- GI Plans are map based, overlaying existing GI assets and new GI aspirations, to highlight areas of particular importance as the focus of future activity.
- Consultation, both with professional stakeholders and local residents, is key in identifying aspirations and creating an Action Plan.

GI Planning in Dallow

- ‘Your Say - Your Way’ community consultation activities in October 2010 as part of the Neighbourhood Governance Programme



Aims of the “Your Say Your Way” Neighbourhood Governance Programme

- To improve and widen local involvement
- To agree community priorities and influence decisions affecting the neighbourhood
- To enable active citizenship, volunteering and community capacity building; and support the community leadership role of ward councillors
- To co-ordinate Council and partnership resources to address priorities
- To build community cohesion on the ground - shared neighbourhood agenda and good relationships

GI Planning in Dallow

Normally when undertaking GI consultation, specific ideas come forward very quickly. In Dallow, general Issues rather than specific ideas were the priorities, in particular:

- Decrease ASB issues on all parks and green spaces, to increase use and enjoyment of the sites
- Increase levels of play and sports facilities on green spaces

These generic issues, along with other aspirations for lighting, benches, bins, more trees and flowers, etc, were considered and where appropriate mapped, to create a draft Dallow GI Plan.

Luton: Dallow Ward GI Aspirations Map

Ref	Aspirations for enhancing GI assets in Dallow
1	Potential to create a wildlife meadow in SW corner of Brantwood Park.
2	Potential to extend tree planting along S boundary of Brantwood Park, with wildflower mix in grassland beneath.
3	Consider enhancing entrance into Brantwood Park from SW corner.
4	Seek to enhance all Kingsway Park site boundaries through appropriate planting of hedges. Consider creating formal garden with seating within entrance to Kingsway Park from Dunstable Road.
5	Seek to improve entrance to Kingsway Park with appropriate signage and access furniture to induce separation and possible screening of vehicular access along southern boundary.
6	Consider creating a picnic area at W end of football ground in Kingsway Park, incorporating seating and more tree planting.
7	Consider improving visual appearance of Kingsway Park play area by planting fence green.
8	Waymark public footpath along E boundary of Foxdell Recreation Ground and consider planting.
9	Potential for trees and wildflower planting along SW boundary of Foxdell Recreation Ground to help screen motorway and increase range of GI assets on site. Area could incorporate seating and natural play.
10	Seek to widen path around Foxdell Recreation Ground football pitch to enable site to be promoted as having disabled access.
11	Consider providing a path (tarmac or surfaced with crushed stone) around W and SW sides of Foxdell Recreation Ground to link with the Public Footpath and the path around the football pitch.
12	Improve entrance and access to Foxdell Recreation Ground, with signage, disabled parking and dropped kerbs.
13	Potential for planting along S boundary of Cohen's Yard to enhance green corridor of guided busway.
14	Potential to enhance Dallow Road Greenspace with planting a community orchard.
15	Consider existing tree trees on Dallow Downs to E of Runley Road Play Area and seek to extend as a community orchard.
16	Seek to manage Dallow Downs and Runley Road Play Area as one site.
17	Seek to enhance the entrance to Runley Road Play Area Dallow Downs, making it more welcoming and promoting it primarily as an entrance to Dallow Downs.
18	

Access and Open Space

- Accessible Sites
- Formal Recreational Areas
- Other Green Infrastructure

Rights of Way Network

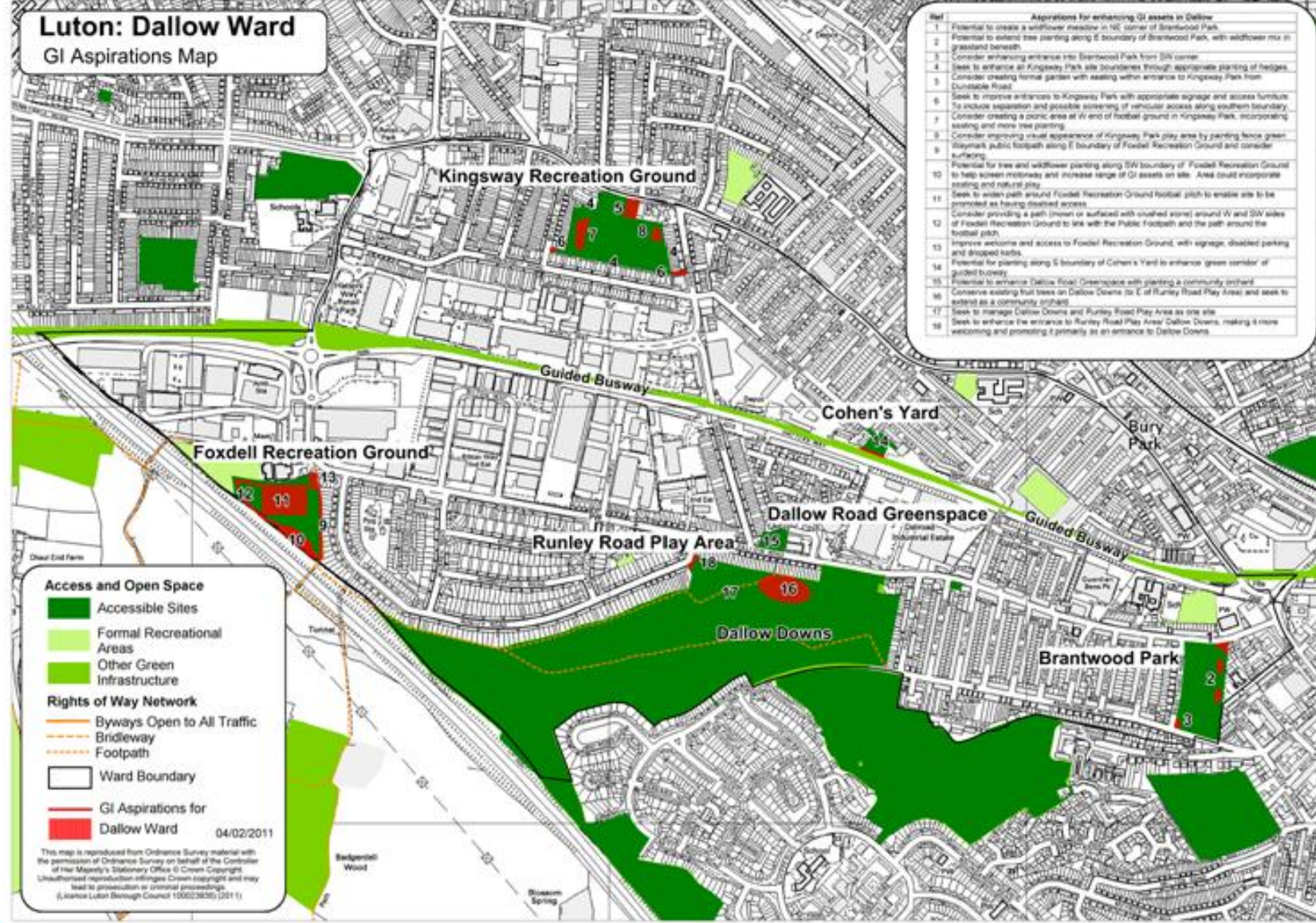
- Byways Open to All Traffic
- Bridleway
- Footpath

Ward Boundary

- GI Aspirations for Dallow Ward

04/02/2011

This map is reproduced from Ordnance Survey material with the permission of Ordnance Survey on behalf of the Controller of Her Majesty's Stationary Office © Crown Copyright. Unauthorised reproduction infringes Crown copyright and may lead to prosecution or criminal proceedings. (Licence Luton Borough Council 100023630) (2011)



Aspirations for enhancing GI assets in Dallow

Ref	
1	Potential to create a wildflower meadow in NE corner of Brantwood Park
2	Potential to extend tree planting along E boundary of Brantwood Park, with wildflower mix in grassland beneath
3	Consider enhancing entrance into Brantwood Park from SW corner
4	Seek to enhance all Kingsway Park site boundaries through appropriate planting of hedges
5	Consider creating formal garden with seating within entrance to Kingsway Park from Dunstable Road
6	Seek to improve entrances to Kingsway Park with appropriate signage and access furniture. To include separation and possible screening of vehicular access along southern boundary.
7	Consider creating a picnic area at W end of football ground in Kingsway Park, incorporating seating and more tree planting
8	Consider improving visual appearance of Kingsway Park play area by painting fence green
9	Waymark public footpath along E boundary of Foxdell Recreation Ground and consider surfacing
10	Potential for tree and wildflower planting along SW boundary of Foxdell Recreation Ground to help screen motorway and increase range of GI assets on site. Area could incorporate seating and natural play.
11	Seek to widen path around Foxdell Recreation Ground football pitch to enable site to be promoted as having disabled access.
12	Consider providing a path (mown or surfaced with crushed stone) around W and SW sides of Foxdell Recreation Ground to link with the Public Footpath and the path around the football pitch
13	Improve welcome and access to Foxdell Recreation Ground, with signage, disabled parking and dropped kerbs
14	Potential for planting along S boundary of Cohen's Yard to enhance 'green corridor' of guided busway
15	Potential to enhance Dallow Rd Greenspace with planting a community orchard
16	Conserve existing fruit trees on Dallow Downs (to E of Runley Rd Play Area) and seek to extend as a community orchard
17	Seek to manage Dallow Downs and Runley Road Play Area as one site
18	Seek to enhance the entrance to Runley Rd Play Area/ Dallow Downs, making it more welcoming & promoting it as an entrance to Dallow Downs.

Dallow GI Plan - Delivery

- BRCC working with LBC to identify funding to deliver actions
- Through our Germin8 and Fairshare funded projects, BRCC is able to offer subsidised labour for undertaking project delivery





Cliff Andrews

Green Infrastructure Team Leader

cliffa@bedsrcc.org.uk

01767 626456