

A new local plan for Luton

Chris Pagdin

Where's the Core Strategy gone?

- Over four years of joint working on the Joint Core strategy ended with both council's agreeing to withdraw the plan in July
- Central Beds agreed to provide additional housing for Luton's needs but two sets of Members could not agree where this should go

Way forward

- Central Beds have endorsed the Joint Core strategy for development management purposes and will be preparing a new Core strategy
- Luton will now be preparing a new local plan and Members are keen to get on with it quickly
- Will report to a Local Plan Working Group

Local plan timetable

Timetable goes to Exec	Jan 2012
Evidence gathering/refining	ongoing
Consultation on initial draft	Sep
Pre-submission consultation	Apr 2013
Submission	Sep
Examination	Jan 2014
Inspector's Report	Apr
Adoption	July

Feeding into the local plan

- Two formal consultation periods, with first being about next September
- Happy to come and present update before this happens (perhaps in 6 months time) and get your feedback on the emerging ideas

Initial discussion with Members

- Need plan to set a framework for the town as a whole
- Accept that there is restricted space within the town – and need to adopt a balanced approach
- Accept the need for innovative solutions for things like schools and housing especially in central area

Initial discussion with Members

- Strategy for town centre is elaboration of current work and policy - key sites; evening economy
- Understand the bus-way will change geography
- Accept the need to establish a network of district and neighbourhood centres

Gathering the evidence

In-house

- Urban Capacity
- Sustainability
- Environment
- Green infrastructure
- Health
- Monitoring

Key cross-boundary

- Housing
- Employment
- Retail
- Transport
- Flooding

Gathering the evidence

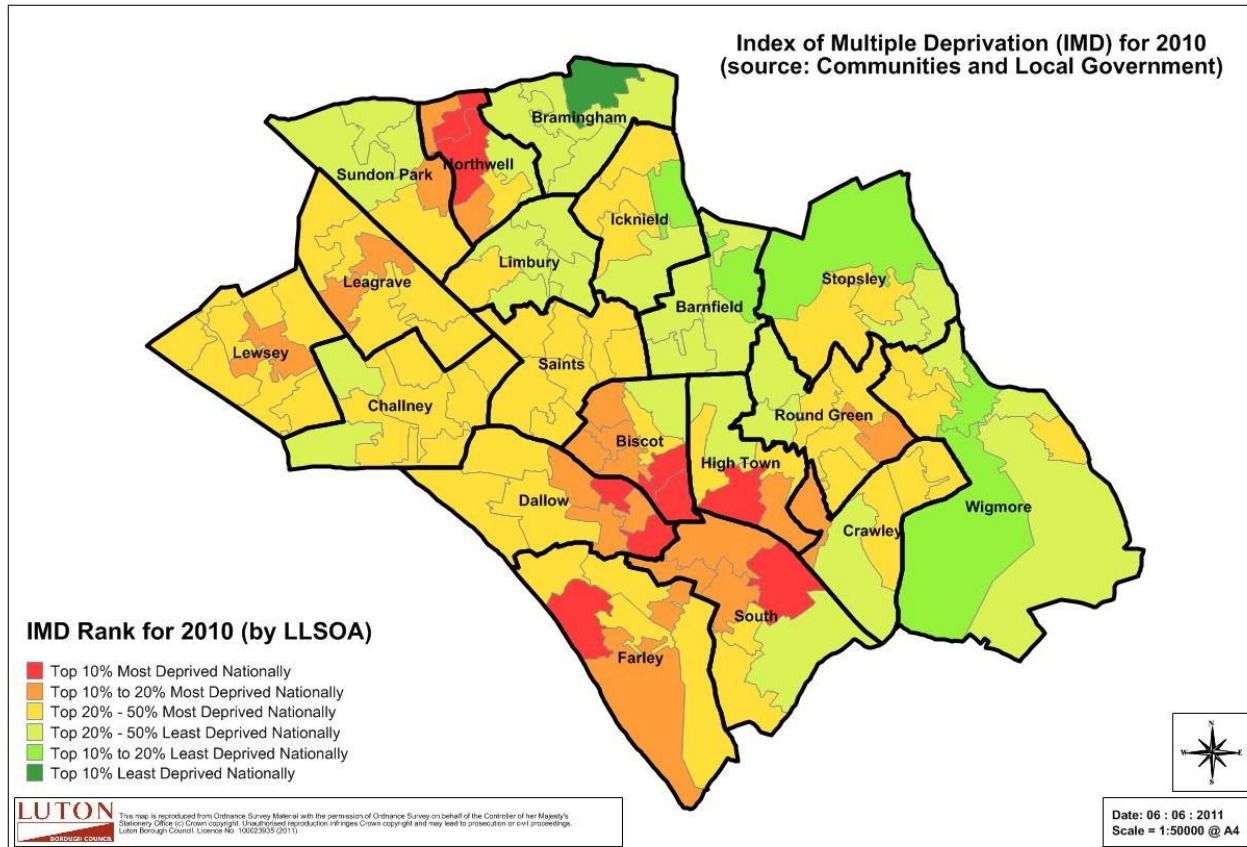
Mainly commissioned

- Housing
- Retail needs
- Infrastructure delivery and viability

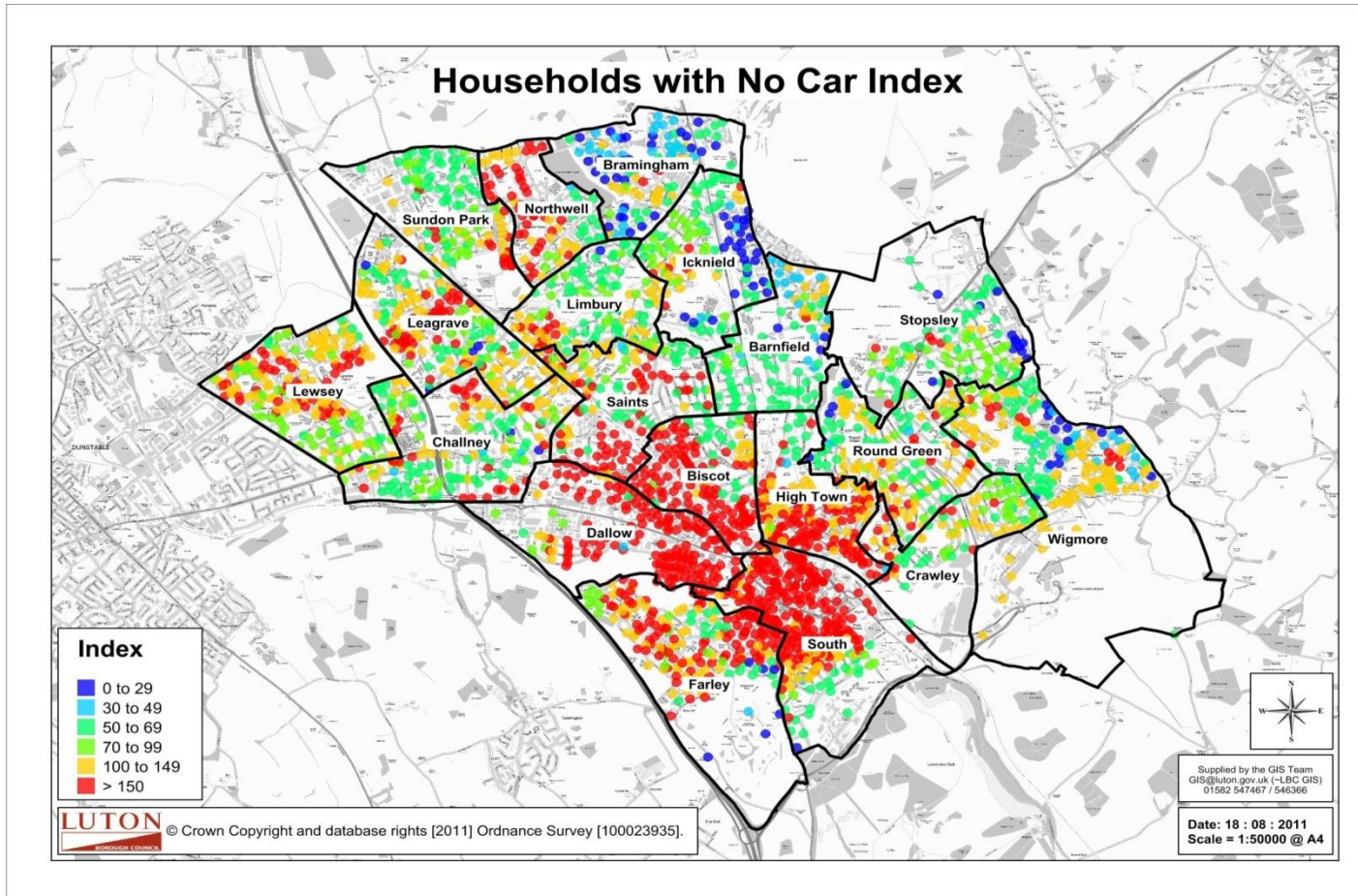
With consultancy help

- Transport
- Gypsies and Traveller
- CIL/S106
- District and neighbourhood centres

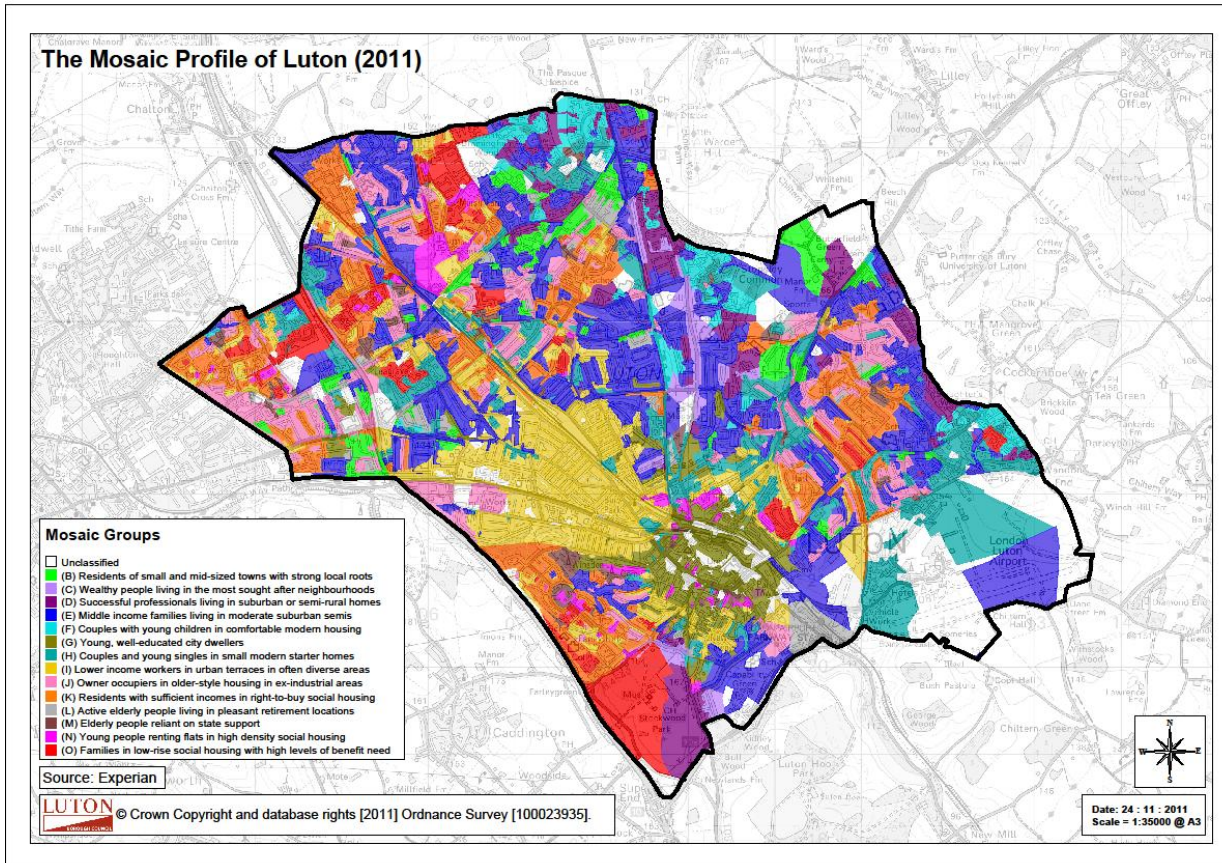
Using data to shape the plan



Using data to shape the plan

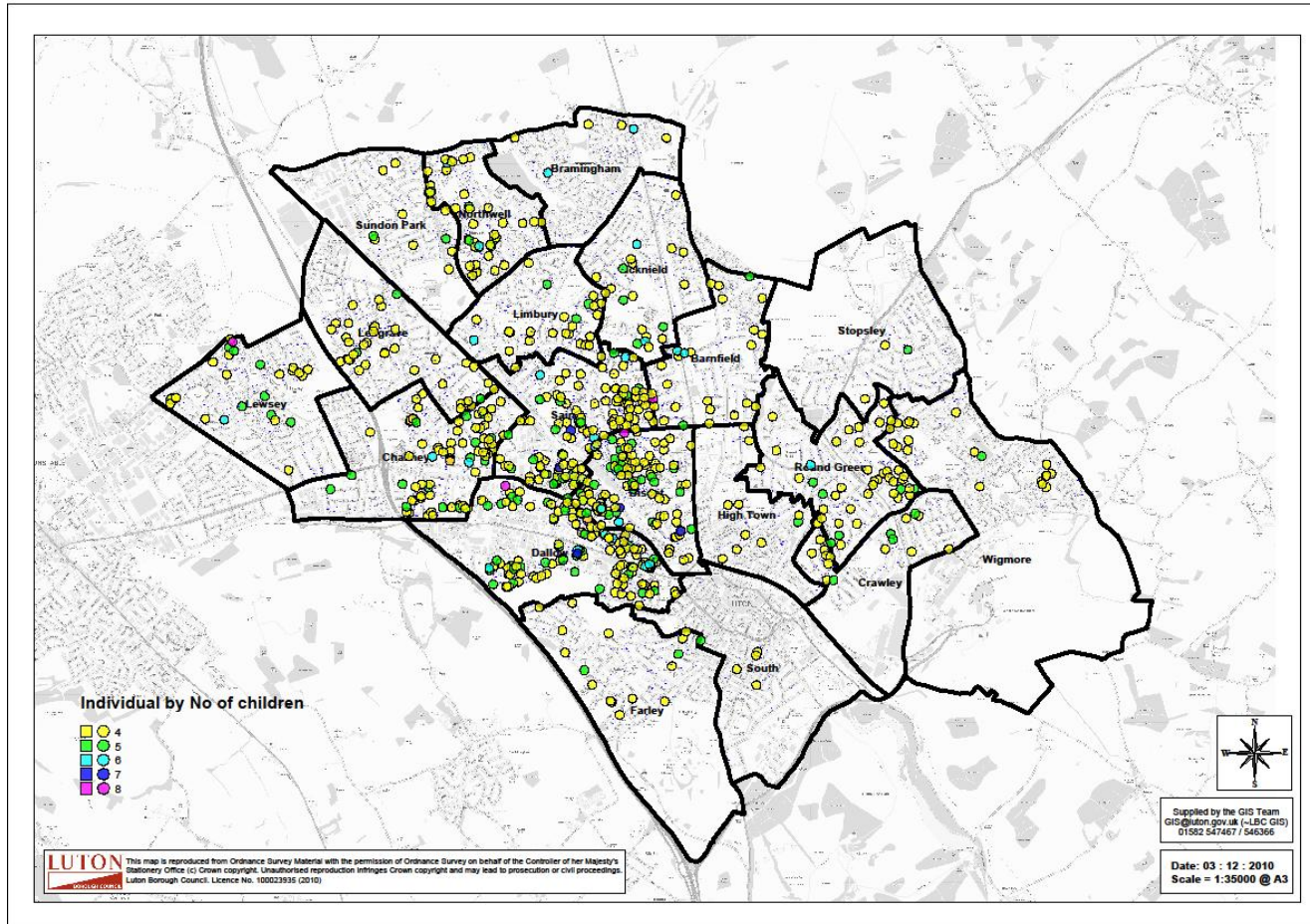


Using data to shape the plan



- Lower income workers in terraces in often diverse areas
 - 33% of road traffic casualties but 17% households
- Middle income families living in moderate suburban semis
 - 26% of drivers but 19% of households

Using data to shape the plan



District/ neighbourhood centres

Hierarchy of district and neighbourhood centres

- District centre: is or needs to be a prime focus for service provision
- Neighbourhood centre: is or needs to be a more local focus for service provision

District/ neighbourhood centres

Role of district and neighbourhood centres

- role in retail policy but also as service centres
- range of uses and densities
- focus for new investment (private and public)
- linked trips – safer routes, traffic management
- public transport hubs – safe waiting areas
- increased vitality; natural surveillance and safety
- health agenda – walking and healthy food

- protection of local parades

Neighbourhood plans

- Genuine concern from Members that neighbourhood plans may come forward before the local plan is in place and conflict with town-wide objectives
- Neighbourhood Forum can ask Council to be allowed to prepare a neighbourhood plan
- If this happens Members keen to engage with this process to ensure sensible outcomes

Conclusions

- Need to progress the local plan providing a balanced approach to housing, employment and other facilities across the town
- Welcome input from Assembly today
- Happy to come back and provide a further update and get further input before formal consultation starts